

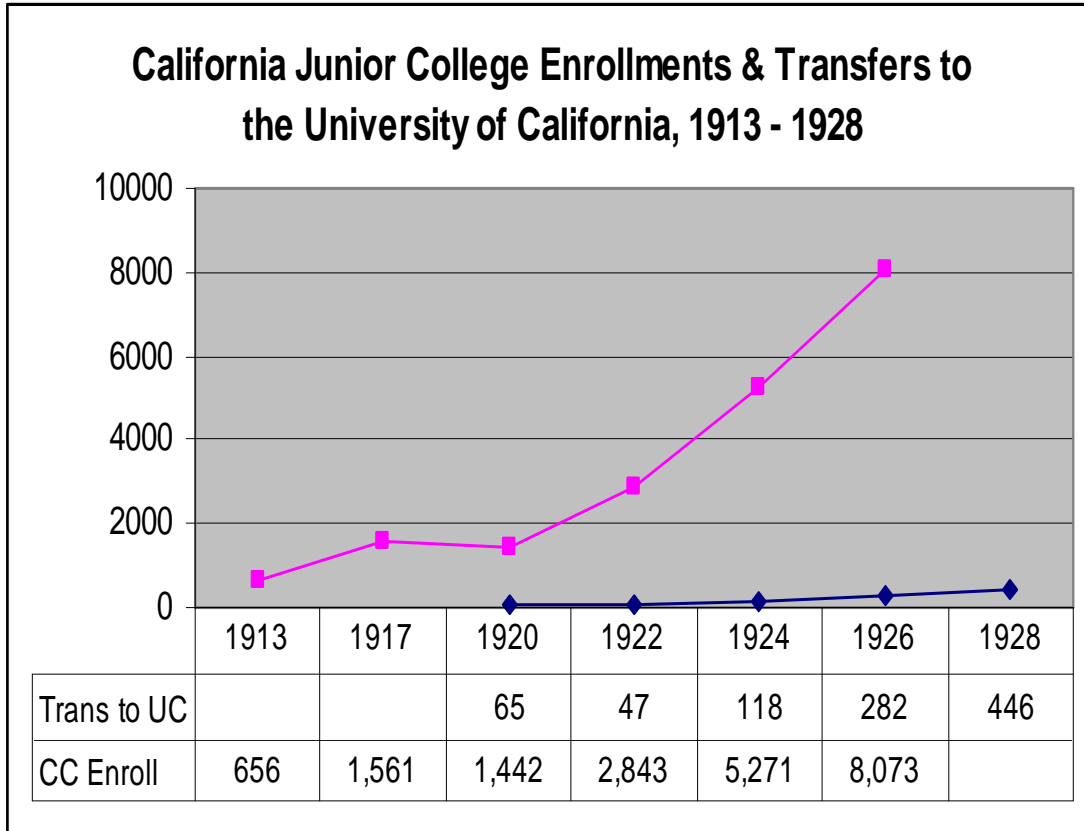
Gateway to Opportunity?

A History of the Community College in the United States

J. M. Beach

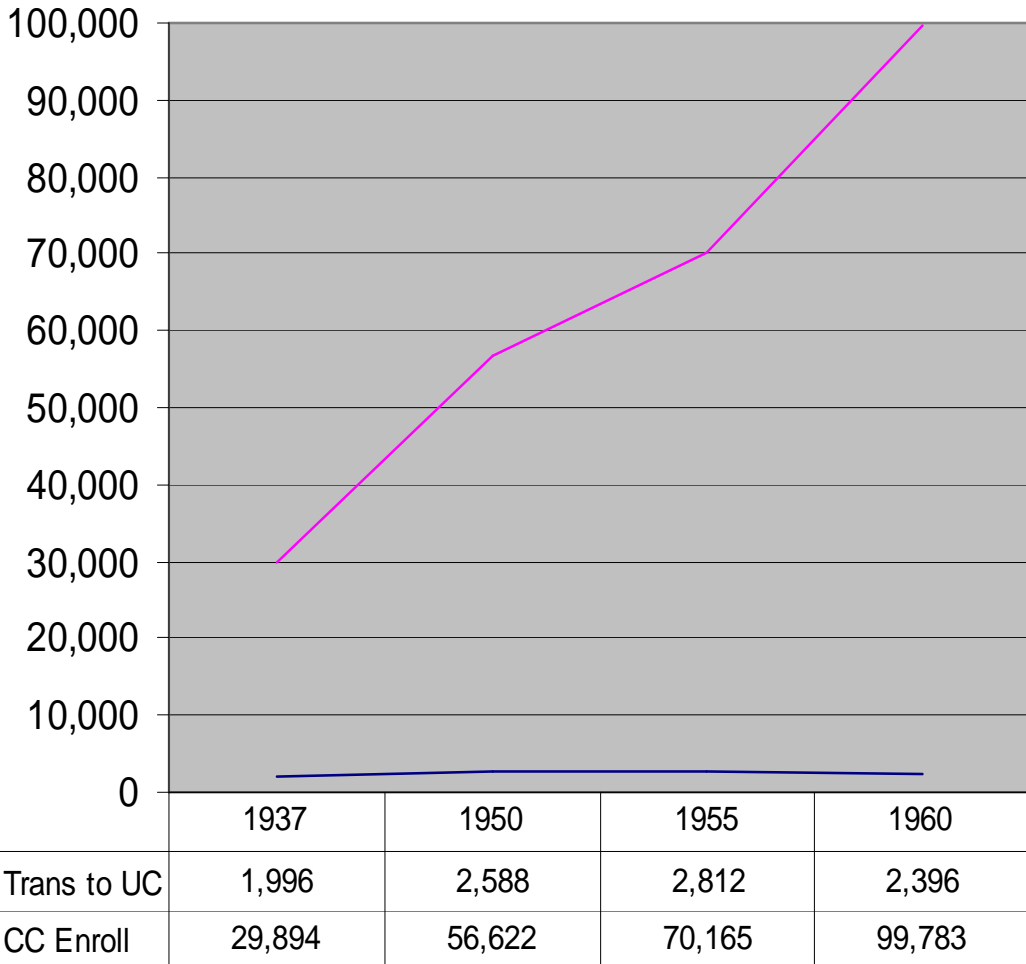
© 2009
All Rights Reserved

Selected Trends in California Junior/Community Colleges, 1913 – 2005¹

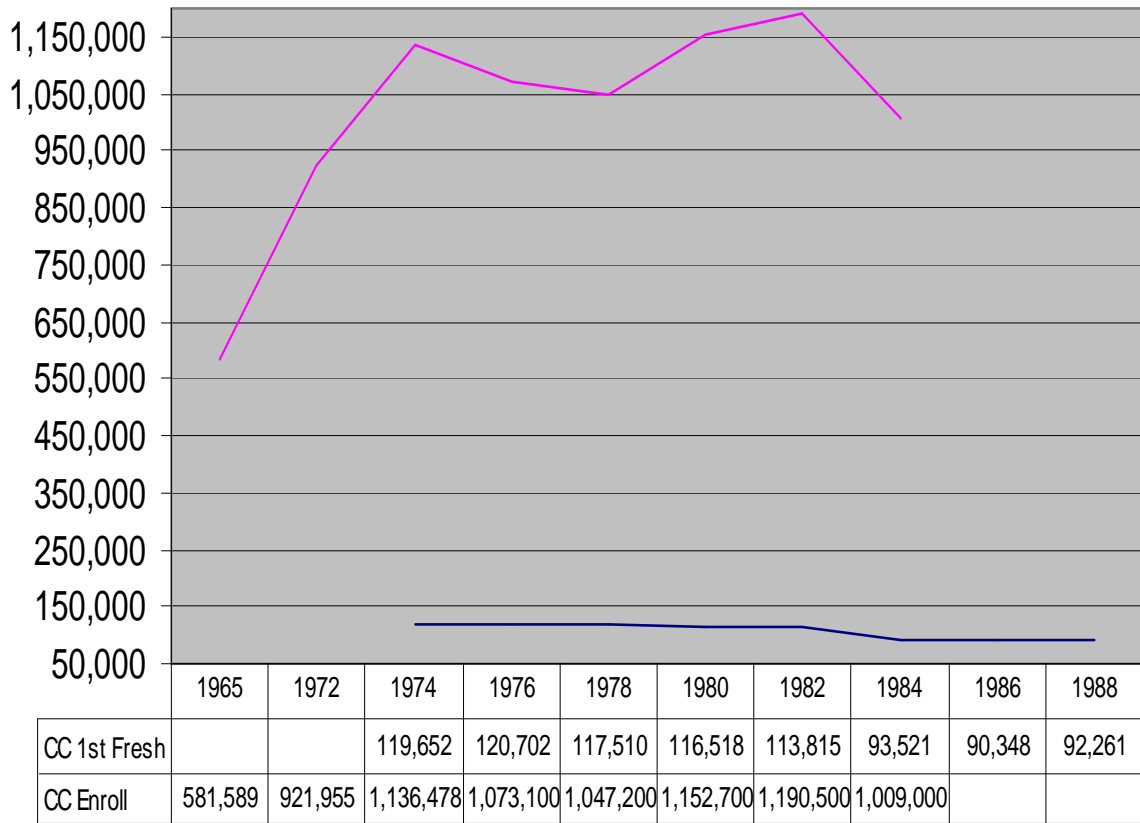


¹ A. A. Gray, "The Junior College in California," *The School Review* 23, no. 7 (Sept 1915), 467; W. J. Cooper, "The Junior-College Movement in California," *The School Review* 36, no. 6 (June 1928), 420; Merton E. Hill, *The Functioning of the California Public Junior College: A Symposium* (Berkeley, 1938), 9, 11; Commission for Master Plan, *Background Papers: The Master Plan Renewed* (1987), 16; Coordinating Council, *A Consideration of Issues Affecting California Public Junior Colleges* (1965), 14; CPEC, *Update of Community College Transfer Student Statistics 1988-89* (1989), 4, 12; CPEC, *Information Digest 1978* (1978), 139; CPEC, *Information Digest 1981* (1981), 135; CPEC, *1984-85 Degrees and Certificates Granted by Sex and Ethnicity: California Community Colleges* (1985), 100; CPEC, *Toward Educational Equity* (Jan 1989), 28; CPEC, *Background Papers to a Prospectus for California Postsecondary Education, 1985 - 2000* (March 1985), 140; CPEC, *Student Transfer in California Postsecondary Education* (June 2005), 2; CPEC, *Higher Education Performance Indicators Report* (1994, 1997, 2001); CPEC, *Custom Data Reports*; California Community College Chancellor's Office, *Data Mart*.

**California Junior College Enrollments & Transfers to
the University of California, 1937 - 1960**
(1950 - 1960 full-time enrollments only)

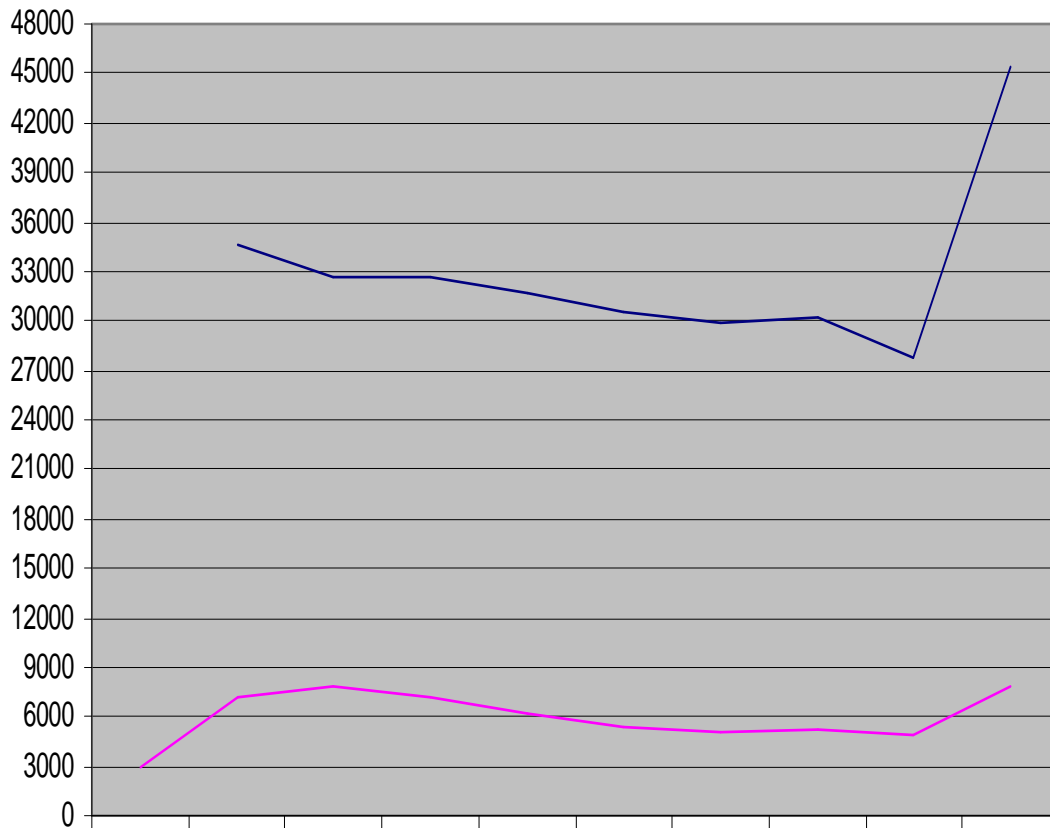


California Community College Enrollments, Total and First Time Freshman, 1965 - 1988



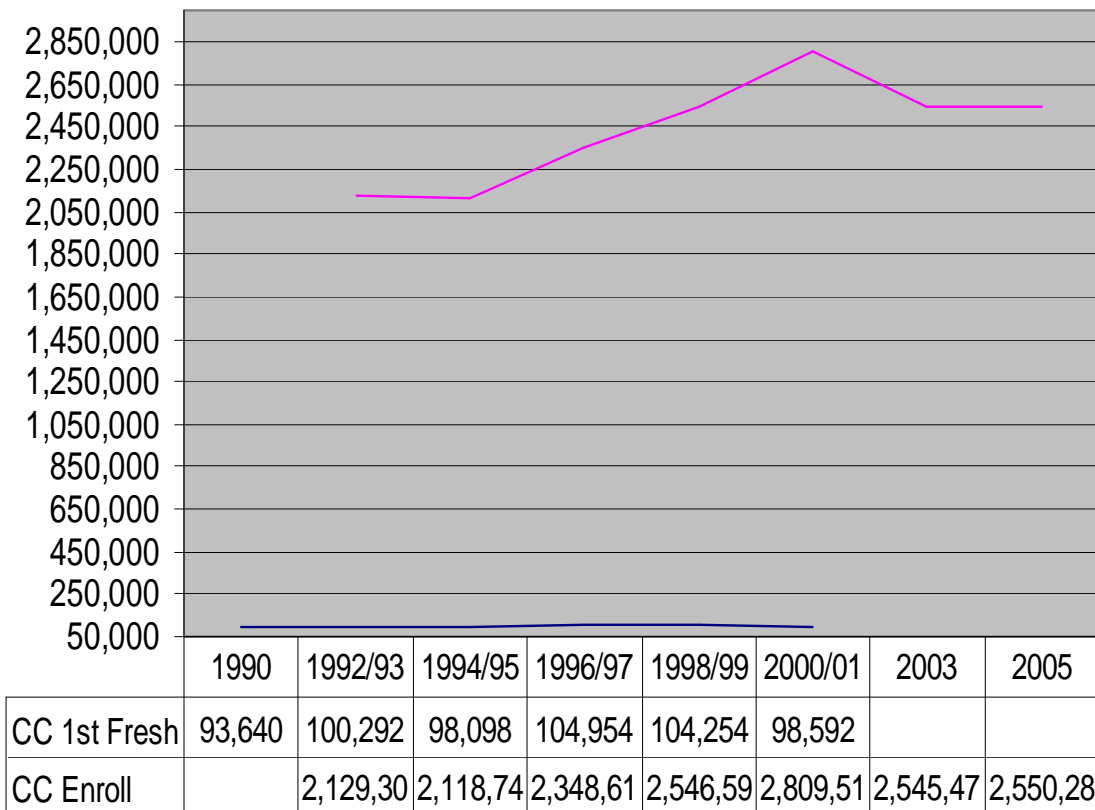
California Community College Transfers to UC & CSU, 1965 - 1988

(1965 to 1986 transfers for fall term only)

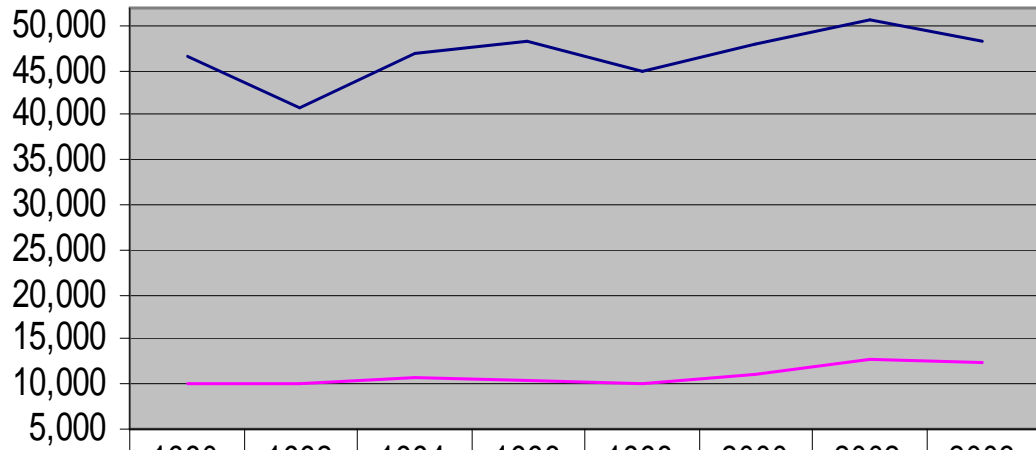


	1965	1972	1974	1976	1978	1980	1982	1984	1986	1988
Trans to CSU		34,619	32,646	32,653	31,609	30,527	29,824	30,134	27,761	45,402
Trans to UC	2,948	7,165	7,813	7,123	6,193	5,386	5,137	5,257	4,861	7,827

California Community College Enrollments, Total and First Time Freshman, 1990 - 2005

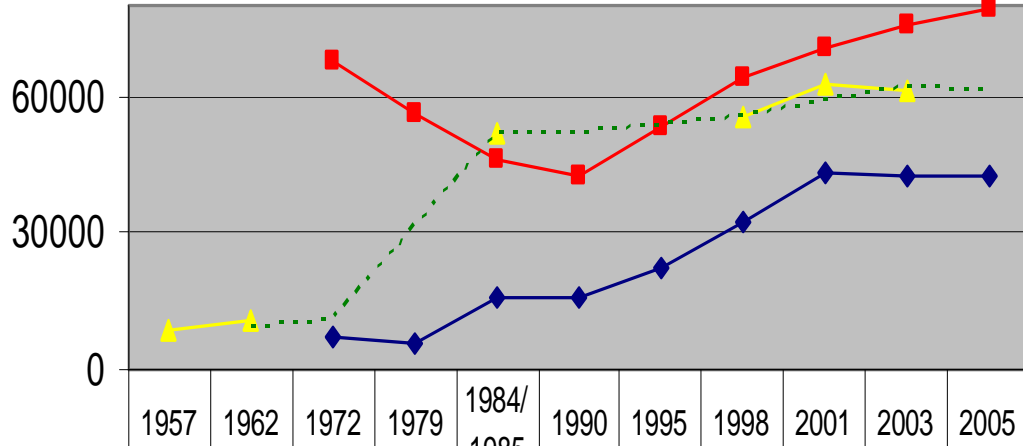


California Community College Transfers to UC & CSU, 1990 - 2003



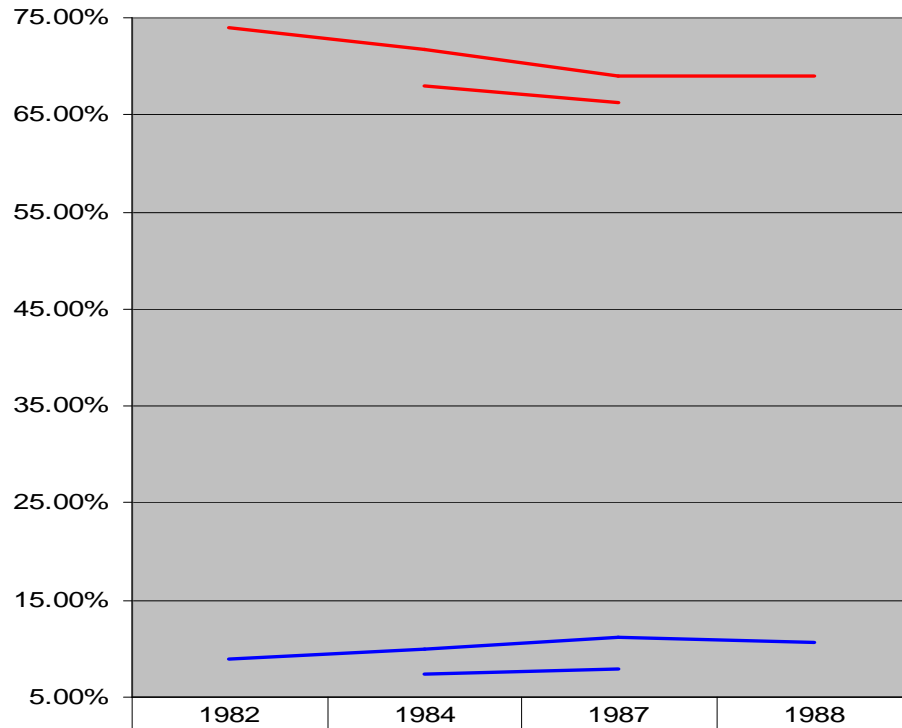
	1990	1992	1994	1996	1998	2000	2002	2003
Trans to CSU	46,678	40,981	46,912	48,349	44,989	47,900	50,746	48,321
Trans to UC	10,007	9,978	10,915	10,479	10,161	11,215	12,780	12,580

California Community College Awards & Transfers, 1957 - 2005



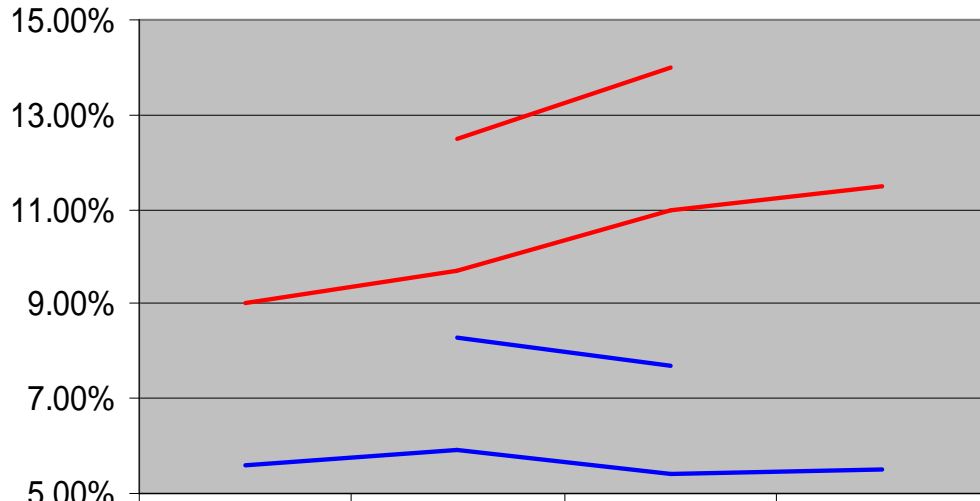
◆ Certificate			7,406	5,671	15,632	16,136	22,522	32,444	43,276	42,180	42,321
■ AA degree			67,801	56,519	46,256	42,529	53,010	64,046	70,490	75,651	79,467
▲ Total Trans	8,550	10,834			52,043			55,150	62,764	60,901	

**California Community College Transfer % by Ethnicity
and Total Student Population, 1982 - 1988**



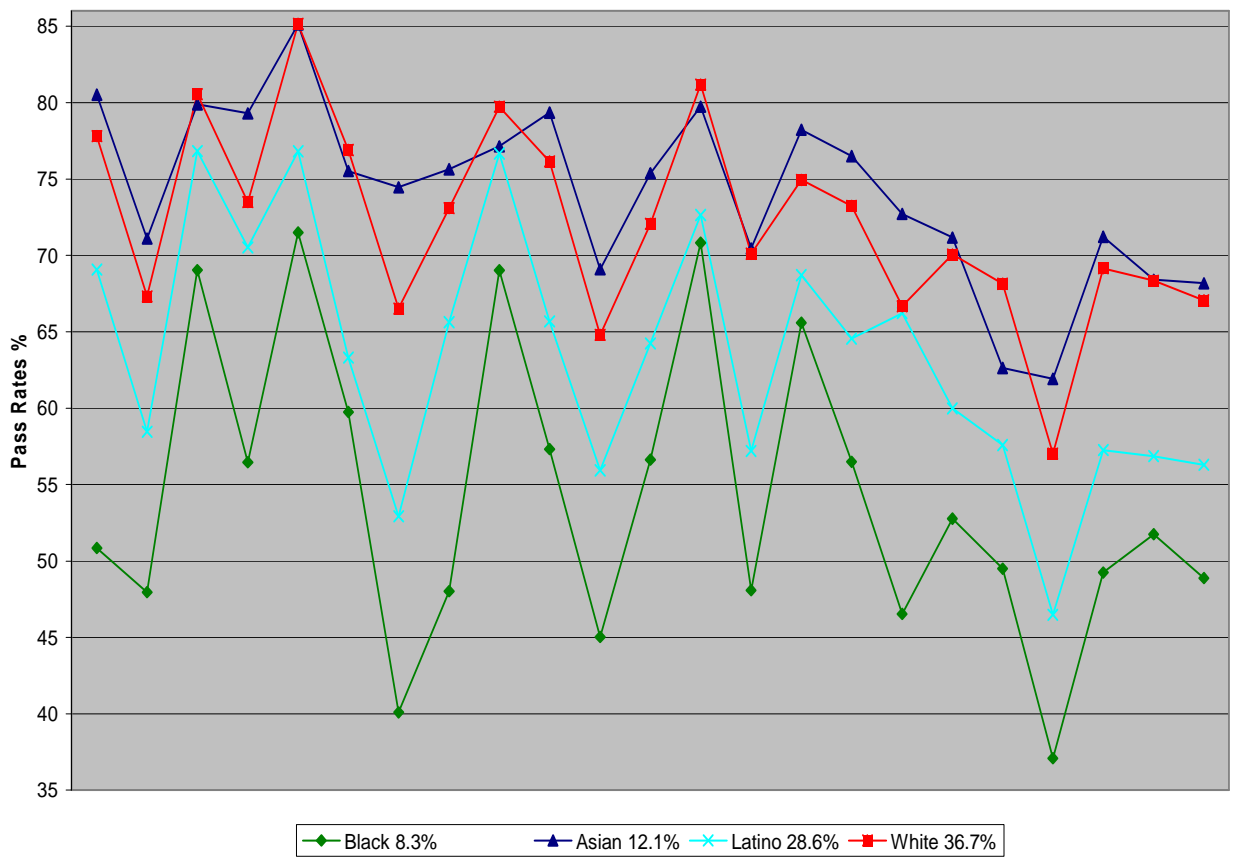
— Asian Trans	9.00%	9.90%	11.10%	10.70%
— White Trans	74%	71.80%	69%	69.00%
— Asian Pop		7.40%	8.00%	
— White Pop		67.90%	66.20%	

California Community College Transfer % by Ethnicity and Total Student Population, 1982 - 1988



	1982	1984	1987	1988
— Black Trans	5.60%	5.90%	5.40%	6%
— Latino Trans	9.00%	9.70%	11%	11.50%
— Black Pop		8.30%	7.70%	
— Latino Pop		12.50%	14%	

California Community College Course Pass Rates by Ethnicity, Fall 2005



California Community Colleges Average Success Rate by Ethnicity, 2005-06

